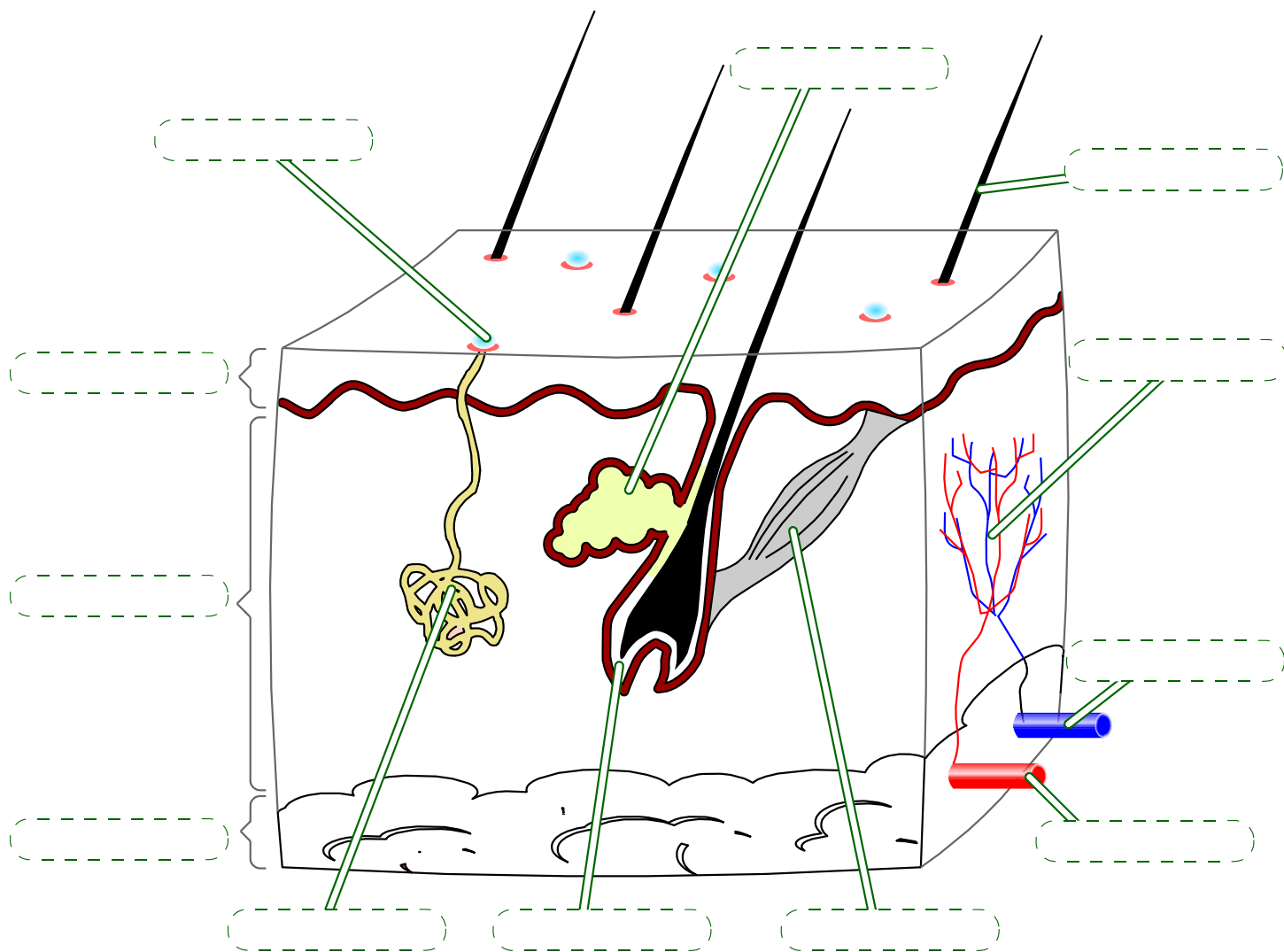


Section through skin



Put the following terms into the correct positions on the diagram:

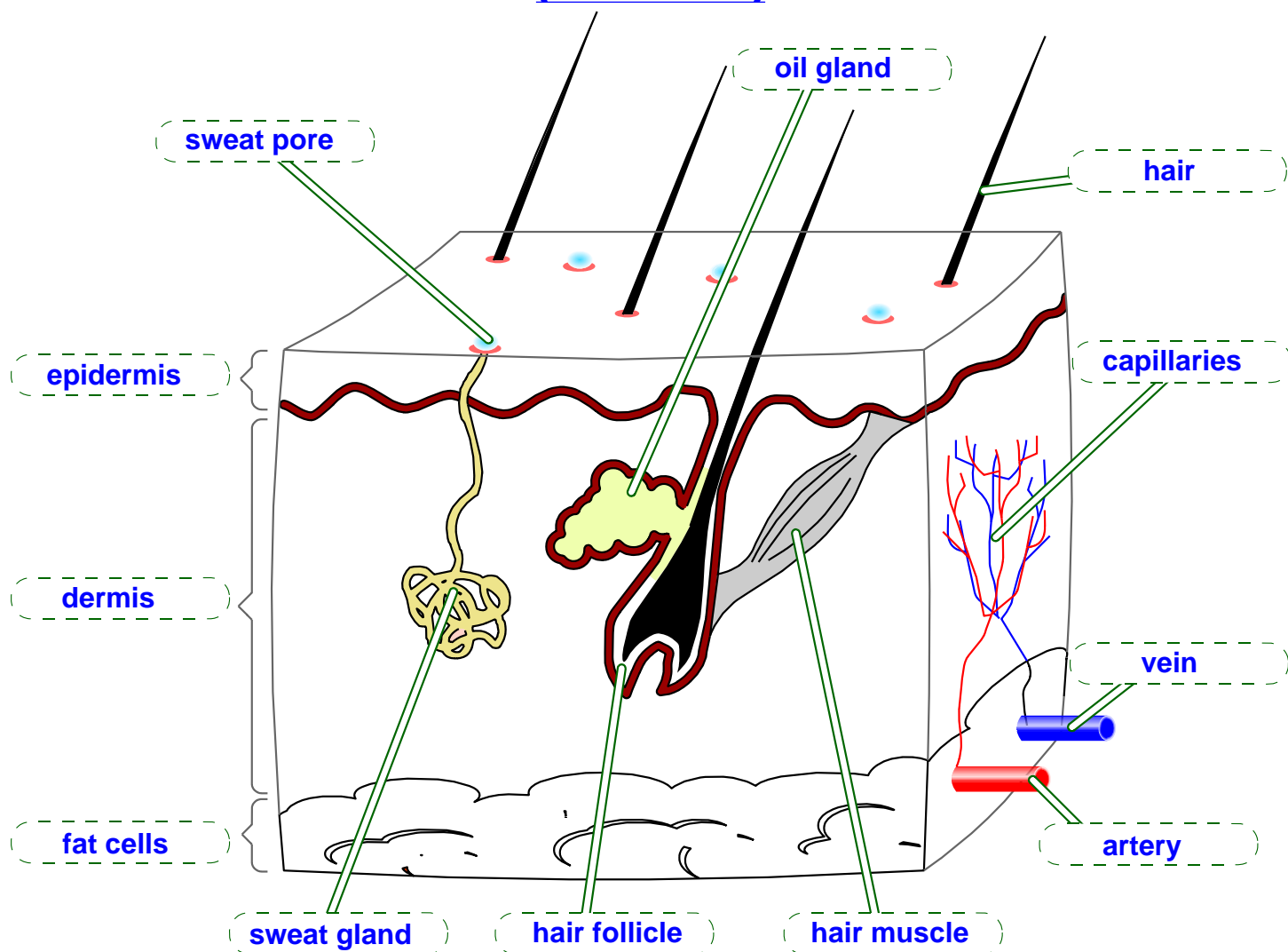
artery dermis fat cells oil gland epidermis hair muscle
capillaries hair sweat gland sweat pore hair follicle vein

Use the terms above to fill in the gaps in the sentences below:

- 1 The _____ produces a salty colourless liquid which passes through the _____ onto the surface of the skin when we get too hot.
- 2 The _____ produces a lubricant that keeps your skin soft and prevents your hair from becoming brittle.
- 3 The _____ grows from a _____ (which can be found in the layer of skin called the _____).
- 4 The _____ is connected to the outer layer of the skin (called the _____); at the other end it is connected to the hair follicle. When this muscle contracts the hair is pulled upright so it can trap more air and provide insulation.
- 5 An _____ carries oxygenated blood from the heart and lungs; a _____ returns the oxygen-depleted blood back to the heart and lungs. These larger blood vessels are found in the _____ under the dermis. The cells of the skin are fed by smaller, thinner tubes called _____.

Section through skin

(Answers)



Put the following terms into the correct positions on the diagram:

artery dermis fat cells oil gland epidermis hair muscle
capillaries hair sweat gland sweat pore hair follicle vein

Use the terms above to fill in the gaps in the sentences below:

- 1 The **sweat gland** produces a salty colourless liquid which passes through the **sweat pore** onto the surface of the skin when we get too hot.
- 2 The **oil gland** produces a lubricant that keeps your skin soft and prevents your hair from becoming brittle.
- 3 The **hair** grows from a **hair follicle** (which can be found in the layer of skin called the **dermis**).
- 4 The **hair muscle** is connected to the outer layer of the skin (called the **epidermis**); at the other end it is connected to the hair follicle. When this muscle contracts the hair is pulled upright so it can trap more air and provide insulation.
- 5 An **artery** carries oxygenated blood from the heart and lungs; a **vein** returns the oxygen-depleted blood back to the heart and lungs. These larger blood vessels are found in the **fat cells** under the dermis. The cells of the skin are fed by smaller, thinner tubes called **capillaries**.