

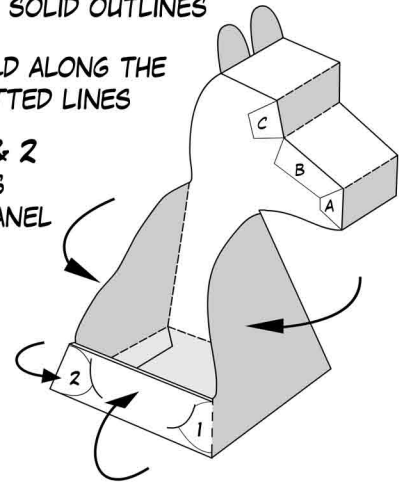
# 3D SKELETON ILLUSION

CUT OUT, FOLD AND ASSEMBLE (SEE DIAGRAM)

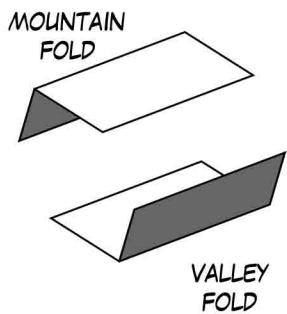
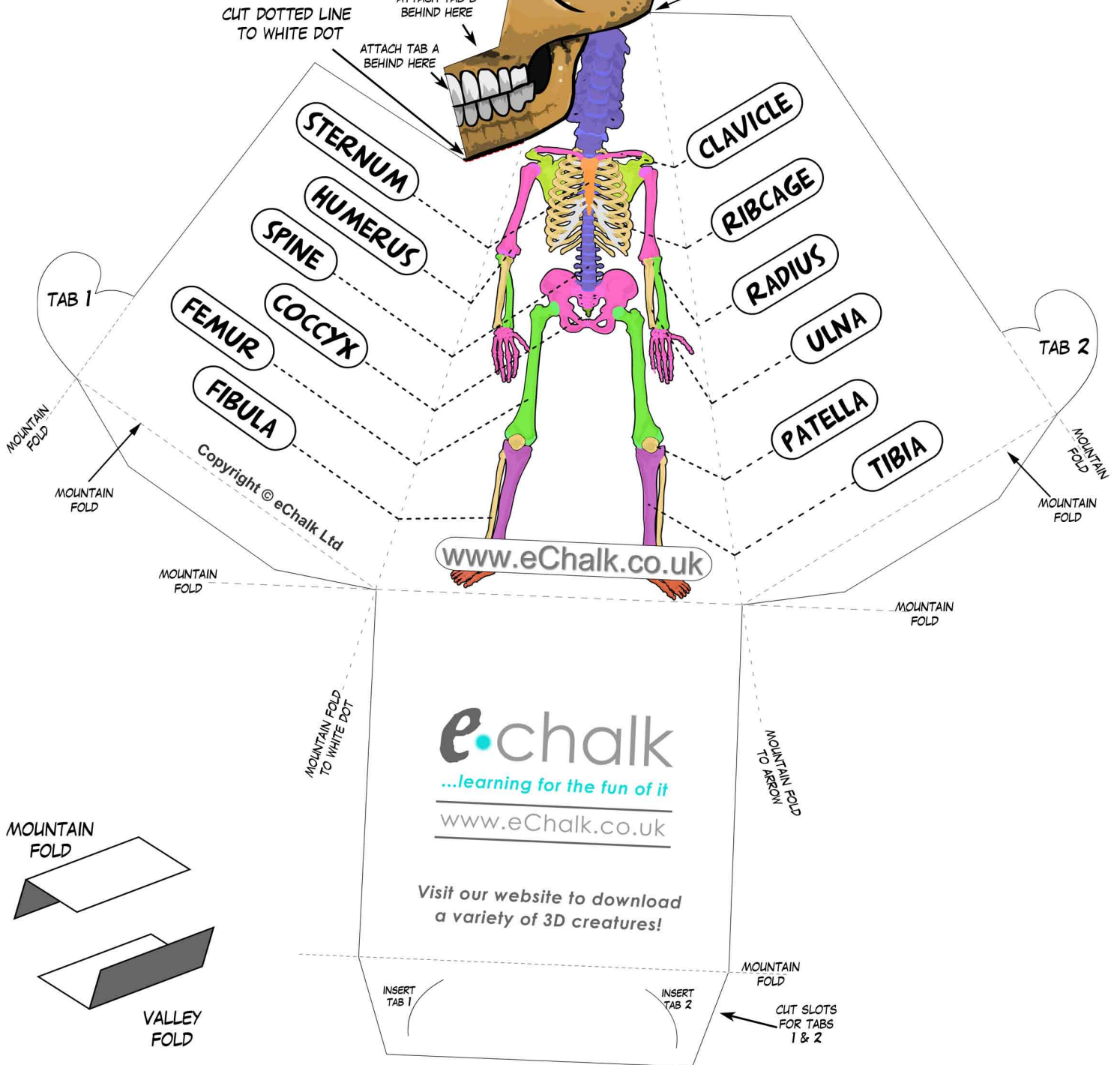
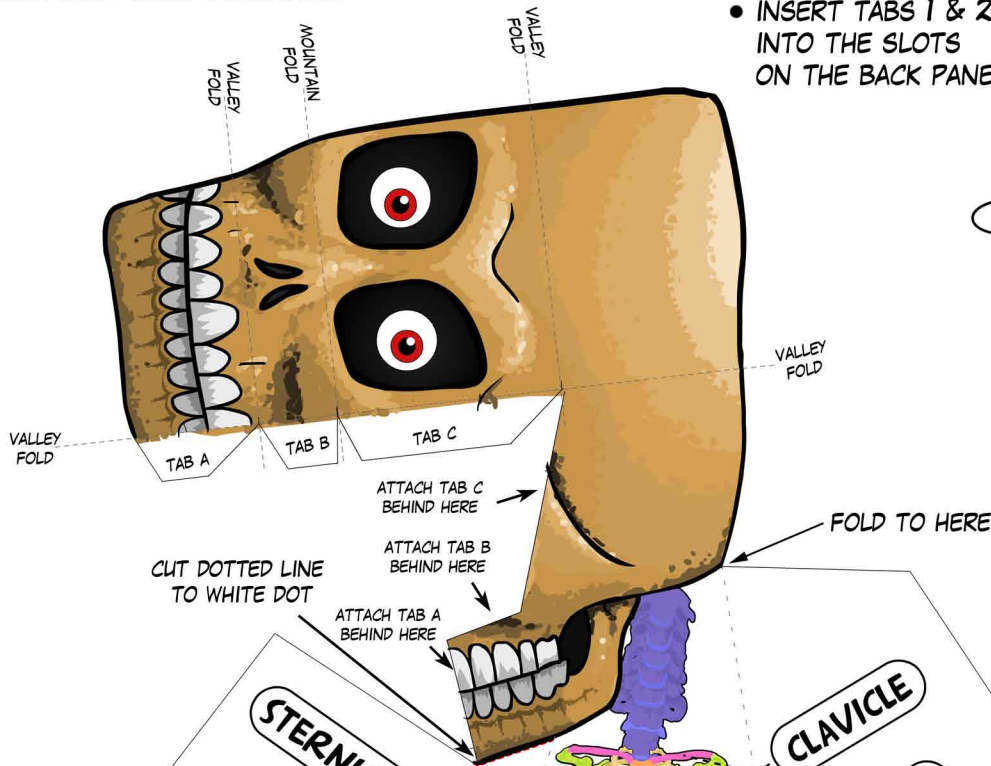
CUT ALONG THE SOLID OUTLINES

FOLD ALONG THE DOTTED LINES

INSERT TABS 1 & 2 INTO THE SLOTS ON THE BACK PANEL



STAND APPROX 1 METRE AWAY, CLOSE ONE EYE AND LOOK AT THE CREATURE'S EYES. MOVE AROUND TO SEE THE ILLUSION...



INSERT TAB 1

INSERT TAB 2

CUT SLOTS FOR TABS 1 & 2

**e.chalk**  
...learning for the fun of it  
[www.eChalk.co.uk](http://www.eChalk.co.uk)

Visit our website to download a variety of 3D creatures!